



7/25/2020

Jennifer M. Koch - Archivist
Carl H. Bloss, Archivist Emeritus

THE ARCHIVES AT BETHANY

1863 Bethany Road Womelsdorf, PA 19567 (610)589-4501 Email: archives@bethanyhome.org

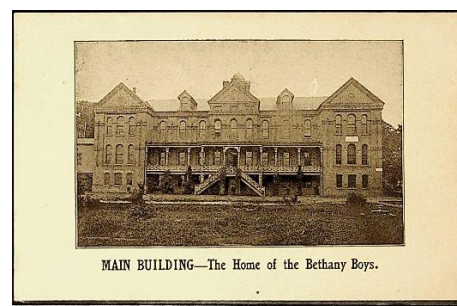
The Buildings of Bethany

This will be our second installment looking at the buildings of Bethany, for July we will look at Santee Hall - 1891, Leinbach Cottage – 1907, and Dietrich Cottage – 1919.

SANTEE HALL

1891

On July 29, 1915, the Reading Times reported, “Largest Bequest to Bethany Home” when \$10,000 was given to the Bethany Orphans’ Home by one Dr. Santee of Philadelphia. The father had previously given \$2,000 and now the son followed with the additional bequeath. According to the article, “The Santee name is also honorably represented among the contributors to the hospital, the Bausman Memorial church and other generous gifts at different times.” (1915)



LEINBACH COTTAGE

1907

In 1906 after a “liberal” contribution from the widow and daughter of George A. Leinbach, of Reading, PA of \$2,000 to put towards a cottage for 20-24 boys and girls ages 6-10. According to our records Mr. Leinbach willed the \$2,000 but died within 30 days of writing such, thus an invalid bequest for charity. The family then waived the technicalities and honored the memory of their father. Leinbach Cottage was completed and formally dedicated at the 44th Anniversary Day on August 1907.

Total costs without furnishings was \$12,587.80.

