

From Cottage Support Staff to CEO: Guiding the Future, Grounded in Experience

Nick Hill, M.S., HS-B.C.P., C.N.E.

Incoming President and CEO



This July 1 marks a deeply meaningful milestone in my journey at Bethany, one that I accept with both humility and gratitude.

Stepping into the role of President and CEO is not simply a professional transition, it is a continuation of a calling that began years ago on the front lines of care as a Cottage Support Staff team member. What makes this moment significant is not just the title, but the path it represents and the

people who made it possible.

When I first joined Bethany, my role was simple in title but transformative in experience. Working directly with our youth in the cottages, I had the privilege of building relationships that shaped my understanding of what this mission requires: patience, consistency, compassion, and an unwavering belief in the potential of every young person we serve. Those early days were not without challenge, but they were rich with purpose. They grounded me in the reality of our work and instilled a deep respect for the responsibility we carry as an organization. They also taught me that impact is often found in small, consistent moments of care and connection.

Over the years, my path at Bethany has evolved through opportunities to lead, learn and serve in new capacities. Each role brought a broader perspective and new responsibility, but I have always carried with me the lessons from the cottages. They have remained my compass, guiding decisions and shaping priorities, while reminding me that our work is, at its core, about people. In moments of both progress and challenge, those early experiences have kept me grounded in what matters most.

This transition to President and CEO is not about moving away from that foundation, it is about building upon it. I step into this role with a commitment to honor the legacy of those who have led before me while embracing the responsibility to guide Bethany into its next chapter. We are an organization with a strong history, a dedicated team, and a mission that has never been more important. As the needs of youth and families continue to evolve, so must we, while staying rooted in who we are.

What gives me the greatest confidence in this transition is our people. From direct care team members to leadership, from support teams to community partners, Bethany is filled with individuals who show up every day with heart, resilience and a shared commitment to making a difference. I have seen firsthand the impact of this work, not just in outcomes, but in moments of breakthrough, trust and hope. Those moments define us and move us forward.

As we look ahead, my focus will remain on strengthening our culture, supporting our team members and ensuring that we continue to provide the highest level of care and opportunity for the youth and families we serve. This includes investing in our teams, advancing innovative programming and deepening our partnerships within the community. It also means listening, learning and adapting so we can meet emerging needs with clarity and purpose.

I recognize that leadership at this level carries both visibility and responsibility. I do not take that lightly. My commitment is to lead with transparency, integrity and a willingness to listen. The best ideas and strongest solutions will always come from collaboration. Bethany's future will be shaped by many voices working together toward a shared vision.

This moment is also one of reflection. I am grateful for the mentors, colleagues and team members who have supported me along the way. I am especially thankful for those who believed in my potential early on, when my title did not reflect where I might one day go but my passion for the work was already clear. I am also deeply grateful for my family at home, who stood by me through late nights, missed milestones and the demands of this work. They never let me give up on the dream of leading this organization.

To our broader Bethany community, our supporters, partners and advocates, thank you for believing in this mission. Your investment makes stories like mine possible and creates lasting impact for those we serve.

As July 1 approaches, I am filled with a sense of responsibility and excitement. This journey, from Cottage Support Staff to President and CEO, reflects the strength of an organization that develops leaders and stays true to its purpose. I am honored to continue this work alongside all of you. Together, we move forward. ■



BCH Summer Bash

Saturday, July 25, 2026

2:00pm-9:00pm

Josh Squared Quartet 2:30pm-4:30pm

Light Up The Moon 6:00pm-9:00pm

Castaneda's - Big Back Burgers - All Belgium Waffles
Vendors - Kids Field Day Activities - And More!

Purchase your ticket at the gate upon entry or by visiting:
<https://givebutter.com/BCHSummerBash>



\$15 Per Car Advance Tickets
\$20 Per Car at Gate

1863 Bethany Rd, Womelsdorf, Pa 19567

Advocating for Youth – Case Managers at BCH

At Bethany Children’s Home we have over 150 team members dedicated to supporting the youth we serve through their healing journey. Our case managers work closely with each youth who comes through our gates.

One of the most critical roles to the overall success of the organization is our Case Managers.

“I always compare it to soccer,” said Case Manager Supervisor Lori Bradley. “If the defense is not doing their job, then everything would fall apart.”

Every cottage is assigned a dedicated case manager who oversees the cases of 8 to 10 youth at a time. From the moment a youth arrives, the case manager supports the intake process and develops

an individualized plan tailored to their specific needs. This ensures that everyone involved understands how to best support that youth.

Case managers serve as strong advocates. They monitor each youth’s progress in our programming, tracking successes as well as challenges. When additional support is needed, they help coordinate specialty services beyond Bethany. Whether a youth wants to attend an off-campus church, join a support group or meet with a therapist, the case manager helps make those connections possible.

Advocacy remains at the heart of their role. Case managers attend court hearings alongside youth and manage communication with the counties we partner with. They provide clarity, context and encouragement. Even when circumstances feel overwhelming, case managers ensure each young person feels heard and supported.

“I love working at Bethany, and the best part of the work I do is, of course, the kids,” said Case Manager Abigail Kokitus. “I love being given the opportunity to build connections with the young people I work with, and the ability to make an impact on their lives in meaningful ways. It is an honor to watch them grow, and to care for and support them.” ■

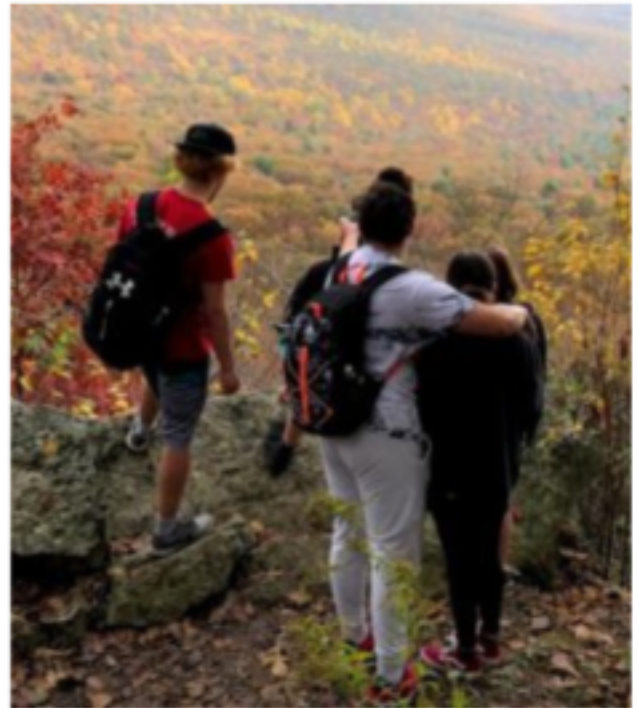


Pictured from bottom left to right Abigail Kokitus, Amber Reed, Shay Celmer, Cori Dickinson, Katie Angstadt. Top left: Cassidy Noll-Munoz, Lori Bradley, Maeve Kelley, Jason Drobnick, Brandy Radwanski, Thalia McNamee



With your donation of \$5 a month or more, you can help make an impact on youths' lives!

Donate today by scanning the QR code, visiting <https://givebutter.com/5DollarFriday-BCH>, or mailing a check to the Development Department at 1863 Bethany Rd, Womelsdorf PA 19567.



Making Every Day Active at Bethany



From left: Wilmit Novas, Mike McWilliams, Jon Torres, Cartier Talford.

Meet Bethany's educational programming team! This team plays a vital role in creating meaningful and engaging experiences for the youth we serve. Through thoughtfully planned activities and outings, they not only keep the youth active and involved, but also help them build important life skills such as teamwork and communication.

The team – Wilmit Novas, Jon Torres, Cartier Talford, Corrine Eckert, and their supervisor Michael McWilliams – work collaboratively to design and facilitate a wide range of programs that appeal to different interests and abilities.

Their activities span everything from sports like soccer and basketball to creative and interactive options such as music bingo and pottery. They take youth on trips to museums, amusement parks, shows and more. By offering this variety, they ensure that every youth has the opportunity to participate and feel included.

In addition to their regular programming, the team puts special care into organizing events around the holidays, which can often be a particularly challenging time for many Bethany youth.

This Easter, they created a fun and memorable Easter egg scavenger hunt. Youth followed a series of clues that led them on an exciting search for hidden eggs. The adventure concluded with each participant discovering their own Easter bag filled with candy! ■

Alumni Spotlight:

Jody Weinreich



In November 1961, 12-year-old Brenda arrived at Bethany Children's Home alongside her younger sister.

Life had changed drastically for their family after the passing of their mother, and when their father was unable to care for them, the four sisters, including Brenda, eventually came to stay at Bethany. Her two older sisters were already on campus, while her younger brother remained in foster care.

Stepping onto campus for the first time, Brenda had no way of knowing she was beginning a chapter she would one day look back on with deep gratitude.

That new chapter began with an unexpected twist: her name. Shortly after Brenda arrived, the house mother realized several other girls were already named Brenda. She asked if Brenda had a nickname; she didn't. When asked if she wanted one, she wasn't sure. Finally, with a warm smile, the house mother declared, "Well, you look like a Jody to me."

And from that day forward, Brenda became Jody, a name she still carries proudly.

At first, Jody was quiet and shy, unsure of where she fit in her new surroundings. But Bethany quickly became a place of comfort. She remembers those early days as busy, structured, and full of community.

Rev. Adams, the superintendent at the time, oversaw much of campus life and strongly believed in the discipline and teamwork that sports could provide. Participation felt almost mandatory and even carried into the high school gym class.

"If we didn't play, she wouldn't give us an A," Jody laughs.

She played soccer and basketball and even served as manager for the hockey team for a time.

Jody also joined the Bethany Choir, not because she believed she was a strong singer, but because choir engagements meant going off campus on Sundays. Bethany would load up the bus and travel to local churches, offering the youth, including Jody, the chance to explore new places and meet new people.

Daily life at Bethany also included chores, which Jody remembers vividly. Ironing was among her least favorite.

"We used to iron Monday, Tuesday, and Wednesday, and if we didn't finish, we went back Thursday. I hate ironing," she said with a laugh.

She was thrilled when permanent press clothing became popular later in her life. Other responsibilities included working in the kitchen, often peeling potatoes or completing repetitive tasks.

But she didn't mind because, "The food was really good. We had all homemade food."

The same year she arrived at Bethany, Jody also met Irv, a fellow youth at Bethany Children's Home, who would become her future husband. They shared classes in seventh grade, and even then, he stood out: funny, outgoing, and a natural leader. He had a knack for getting her into trouble, often stirring up mischief that somehow landed Jody and her friend in the hallway, but never him. In ninth grade, the two started dating.

When Irv left Bethany during his junior year to work and live closer to family in Allentown, the two continued seeing each other. Every Saturday evening, he traveled back to campus for a date night with Jody.

When Jody eventually left Bethany, she planned to move to Allentown to be near him, but Rev. Adams encouraged her to join her older sister in Williamsport instead. She quickly realized it wasn't the right fit — she couldn't drive her sister's stick shift car and struggled to find work. When Irv visited next, Jody decided to leave with him and move in with his sister. Jody's sister didn't seem happy about her suddenly leaving.

"Whether [or not] she was mad at me, she didn't talk to me," Jody remembers.

But when she later called to ask her sister to be matron of honor in her wedding, things softened. Jody and Irv were married in Bethany's Bausman Chapel and shared 55 years together until his passing nearly three years ago.

Today, Jody remains deeply involved in her community. She serves on the regional board of the Alliance of Retired Americans, is president of the VFW Auxiliary, and is a retired liaison for Workers United. She also enjoys crocheting and cherishes time with her grandniece and her grandniece's two daughters, Laura and Holly.

Reflecting on her years at Bethany, Jody says the greatest gift she received was friendship and the foundation it gave her for a successful life.

When offering advice to the youth of Bethany preparing for their next chapter, she said:

"Remember your fellowship, and what you learned here; take it with you in life. You'll realize more, once you leave, how much you learned here. And how much the adults helped you.

"You might not realize it while you're here but take away the different things you learned. And keep that friendship that you had."

Jody remains close with friends from Bethany, former coworkers, and the many people she's met through the Alliance of Retired Americans, the VFW, and Workers United. ■

Meet the Compliance Team!



From left: Paula Calderon, Ashlie Cheresini, Deb Schaeffer, Mel Zeiber, Amy Sterner

The team of Vice President of Impact and Compliance Amy Sterner, Director of Compliance Mel Zeiber, Health Care Insurance Specialist Deb Schaeffer, and Compliance Specialists Ashlie Cheresini and Paula Calderon work diligently to ensure that Bethany adheres to the policies and procedures that protect all youth and team members. Their collaborative approach combines careful oversight, ongoing training, and a proactive mindset that helps identify and address potential concerns before they arise.

Through consistent communication and a shared commitment to accountability, this team fosters a culture where compliance is not just a requirement, but a core value woven into daily operations. Their efforts support team members across all levels, empowering them with the knowledge and resources needed to maintain a safe and supportive environment.

Under the team's leadership, Bethany received zero citations for the fifth consecutive year from the annual Office of Children Youth and Families (OCYF) inspection – an outstanding achievement that reflects Bethany's commitment to excellence.

Thank you for your continued dedication to making Bethany a safe place where youth can heal and grow! ■

TRIBUTE: A NIGHT AT THE MASQUEARADE

YOU'RE INVITED



10 | 01 | 26

Join us for an exciting evening as we celebrate our supporters and raise critical funds for housing renovations!

5:30PM - 8:30PM

TRONSPIRE EVENTS COMPLEX
2800 N READING RD, ADAMSTOWN PA 19501

TICKETS: \$120 PER PERSON

Purchase your ticket now by scanning the QR code or by visiting: <https://gvebutter.com/2026TributeDinner>



2026 Bingo Night Recap

On Feb. 1, Bethany Children's Home was joined by 188 attendees at Goodwill Fire Company for our annual Purse/Cash Bingo event. Thanks to our dedicated volunteers, sponsors, community partners, and dedicated bingo players, we were able to raise a total of \$17,254.51 toward the construction of a new outdoor recreational complex for the youth at Bethany.

Our Auxiliary and Development committees ensured the day ran smoothly, from the raffle tables to the delicious food offerings.

Thank you to our in-kind donors who helped make this event possible! Tina's Salon, West Reading Hot Yoga, Tom Sturgis Pretzels, Shirley's Tequilla Bar, Wilbur Chocolate Factory, Dieffenbach Potato Chips, B2 Bistro, West Reading Motor Club, Austin's Bar and Grill, and Tompkins Community Bank. ■



From Vision to Reality: Bethany Launches Construction on New Youth Recreation Space

Bethany's Development team has been fundraising for a new outdoor recreational complex since December 2024 to replace our current complex built in 1941. In total, we have raised over \$117,000.

On Wednesday, March 25, Bethany held a groundbreaking ceremony celebrating the start of Phase 1 of the project!

We are grateful to everyone who came to celebrate. Thank you to our donors, volunteers, team members, Berks County Commissioners Christian Leinbach and Dante Santoni, the Greater

Reading Chamber Alliance, the offices of Sen. Chris Gebhard and Rep. Dan Meuser, and Lancaster Chamber for your support.

Lancaster Asphalt began construction on the basketball court on Monday, March 30, and is expected to be completed in late May.

Youth who come to Bethany have experienced some form of trauma whether that be homelessness, physical/sexual abuse, trafficking or neglect. At Bethany we strive to give youth the resources they need to overcome and to continue to grow in their journey.

It is essential for young minds to be active and creative for psychological development, but it also provides an outlet for our youth to express themselves in a different way. This outdoor recreational complex offers a safe space for the youth at Bethany to play and to just be kids. We strive to provide our youth with the resources they need to build a brighter future.

We could not be more excited to see our youth enjoying the new court! ■



Pictured from left to right: Deputy CEO Nick Hill, VP of Impact and Compliance Amy Sterner, VP of Programs & Operations Dr. Joe Charette, and President & CEO Dr. Joseph Birli.



Pictured from left to right: Deputy CEO Nick Hill, Lancaster Asphalt Owner & President Wesley Powers, and Bethany President & CEO Dr. Joseph Birli take part in the commemorative groundbreaking to celebrate the start of construction.



Pictured from left to right: Fisher Financial President Brian Fisher, and Bethany supporters Dawn and Jack Fry.



1863 Bethany Road
Womelsdorf, PA 19567
bethanyhome.org
(610) 589-4501

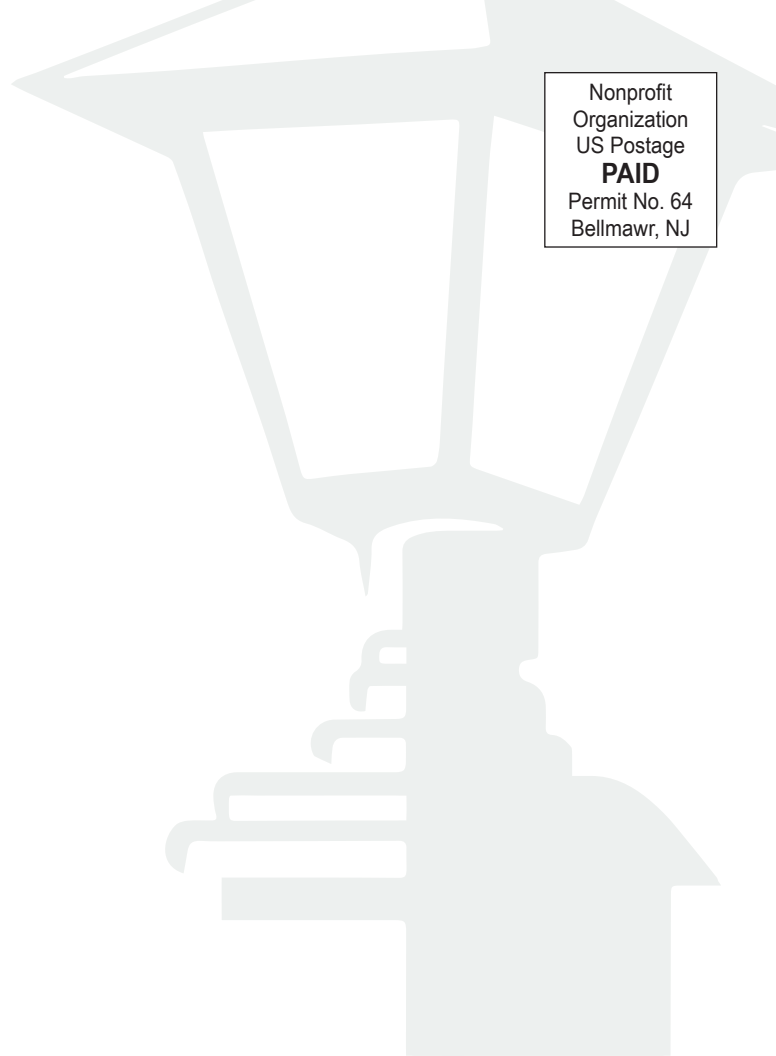
Nonprofit
Organization
US Postage
PAID
Permit No. 64
Bellmawr, NJ



CERTIFIED
PRAESIDIUM
GUARDIAN

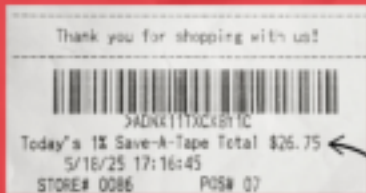


PCCWFS



SUPPORT BETHANY WITH YOUR REDNER'S RECEIPTS!

- USE YOUR REDNER'S REWARDS CARD
- COLLECT YOUR RECEIPTS
- SEND YOUR RECEIPTS TO US



P.S. ELIGIBLE RECEIPTS WILL HAVE A 'SAVE-A-TAPE' TOTAL

About Bethany Children's Home

Founded in 1863, Bethany Children's Home has provided a safe place of nurture, protection and supportive care to aid youth in their own self awareness, growth and healing for a brighter, healthier future. Every day, youth who have been abused, neglected or abandoned are taking their lives back with the help of Bethany.

SERVICES: Spiritual services, educational programming, recreation, social services, and more are provided to every youth at Bethany.

PROGRAMS: Bethany offers individualized programs for youth who for whatever reason cannot live with their family or a substitute family. From emergency services to longer term Residential Group Home programs, Bethany supports youth while they heal and prepare for the next steps of their journey.

Thank you for your continued support in the healing of our youth.

